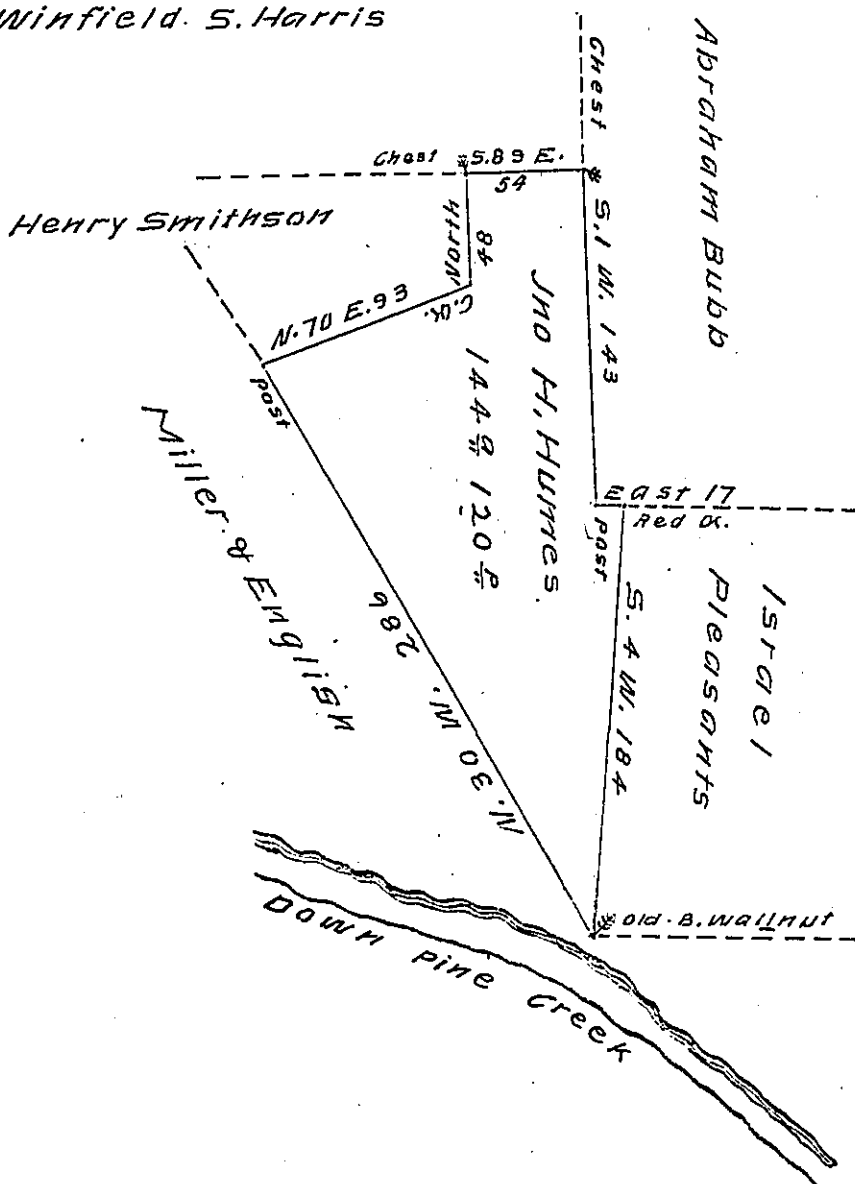


FORM NO 1.

Winfield S. Harris



Situate in Cummings Township Lycoming County, on the south east side of the main branch of Pine Creek, Surveyed to John H. Humes on the 2^d day of April 1857 in pursuance of his Warrant for 140 acres bearing date the 10th day of March 1857, Containing one hundred and forty four acres, one hundred and twenty perches with allowance of Six per Cent for Roads &c

A. H. McHenry, Co. SUR.

To J. Porter Bramley Esq }
 Surveyor General

IN TESTIMONY that the above is a copy of the original remaining on file in the Department of Internal Affairs of Pennsylvania, made conformably to an Act of Assembly approved the 16th day of February, 1833, I have hereunto set my Hand and caused the Seal of said Department to be affixed at Harrisburg, this Nineteenth day of December 1907

Henry Houch
 Secretary of Internal Affairs.